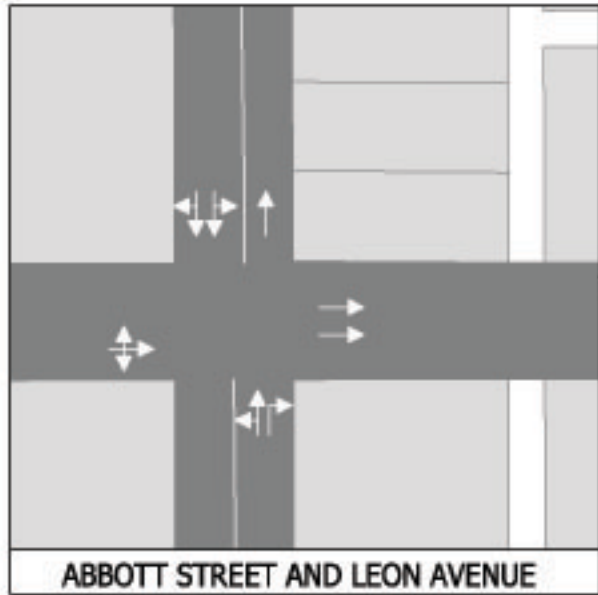
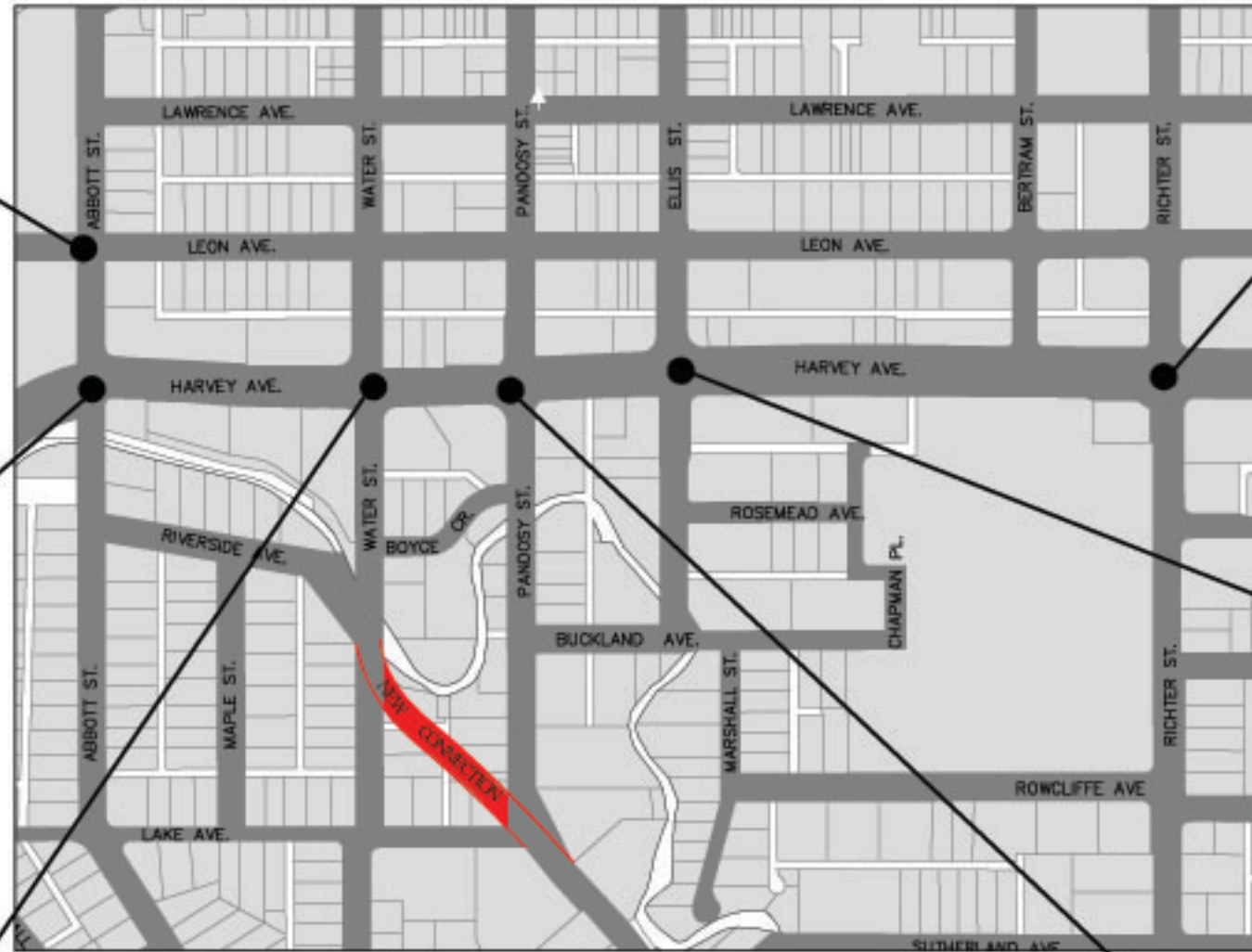
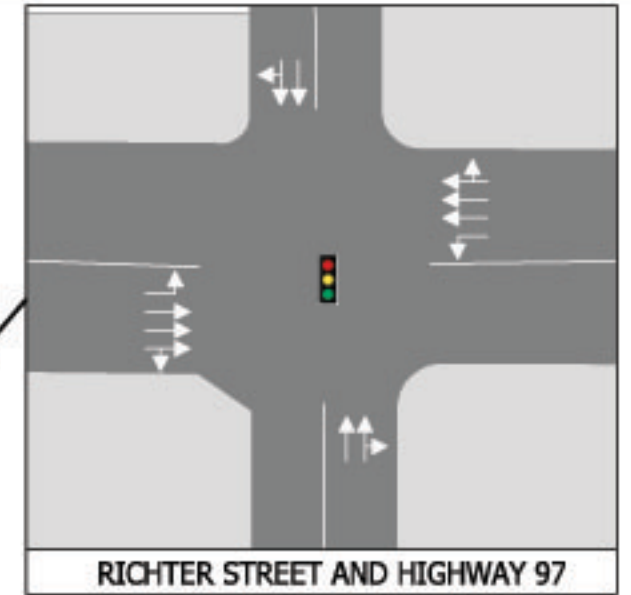




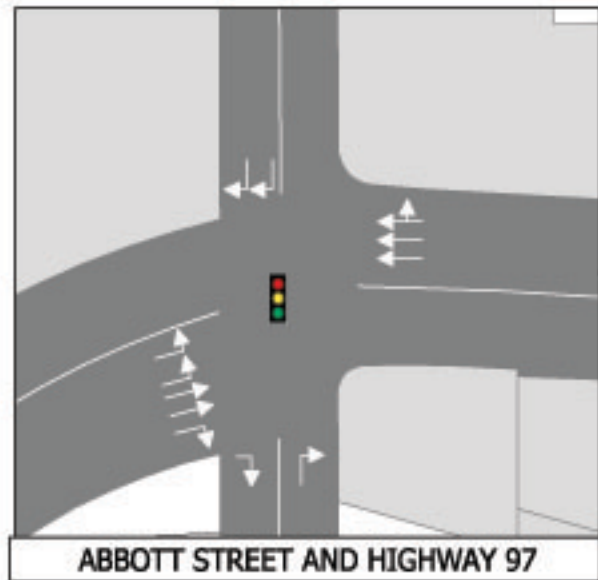
# ALTERNATIVE 19 Two-Way Water-Pandosy Link



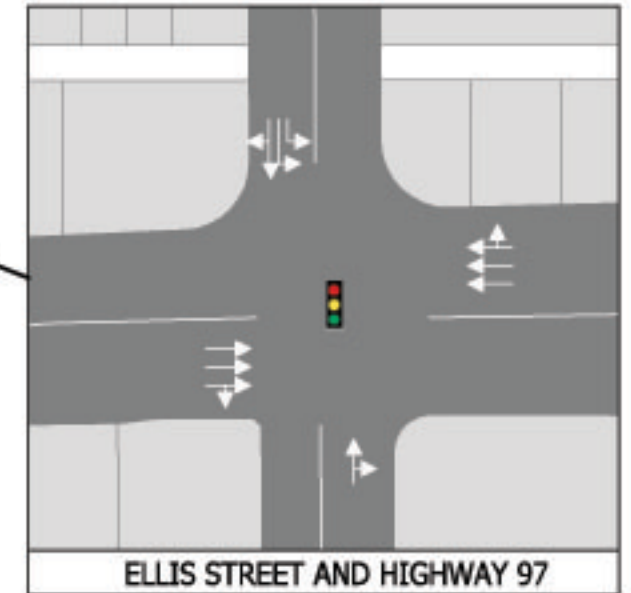
ABBOTT STREET AND LEON AVENUE



RICHTER STREET AND HIGHWAY 97



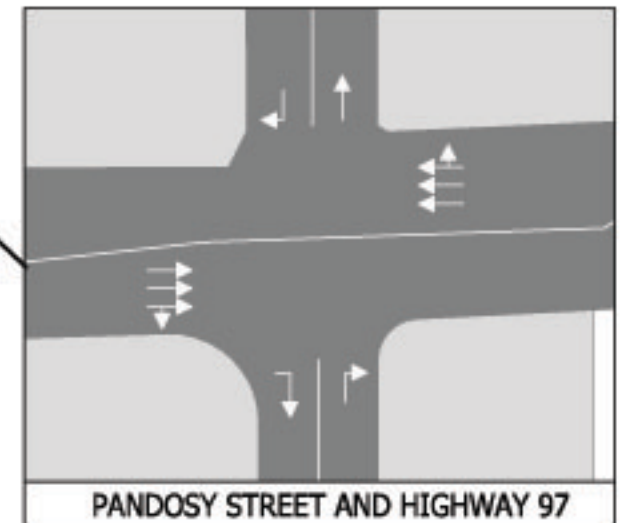
ABBOTT STREET AND HIGHWAY 97



ELLIS STREET AND HIGHWAY 97



WATER STREET AND HIGHWAY 97



PANDOSY STREET AND HIGHWAY 97

- NEW CONNECTION FROM WATER TO PANDOSY
- DOUBLE LEFT NORTHBOUND ON WATER
- DOUBLE LEFT SOUTHBOUND ON ELLIS
- WESTBOUND LEFT TURN FROM 97 RESTRICTED AT ELLIS; USE LOOPBACK VIA PANDOSY AND LEON
- EASTBOUND LEFT TURNS AT ABBOTT AND RICHTER
- RAISED MEDIAN ALONG HIGHWAY 97 AT PANDOSY; RIGHT IN RIGHT OUT
- RICHTER AND PANDOSY ONE LANE EACH WAY + LEFT TURN LANE