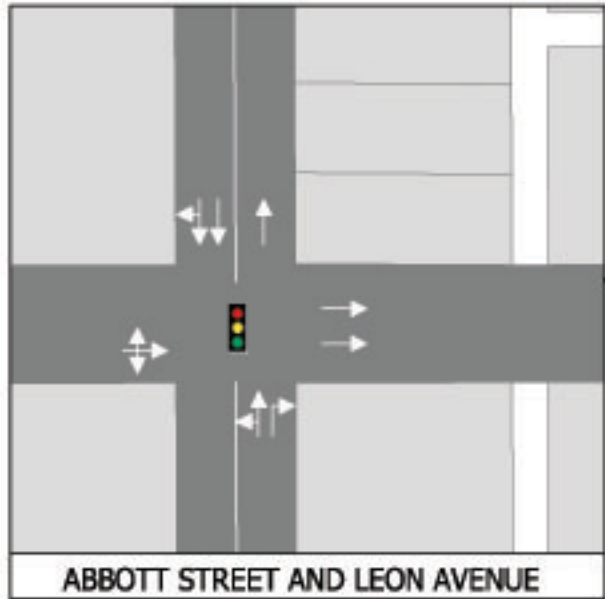
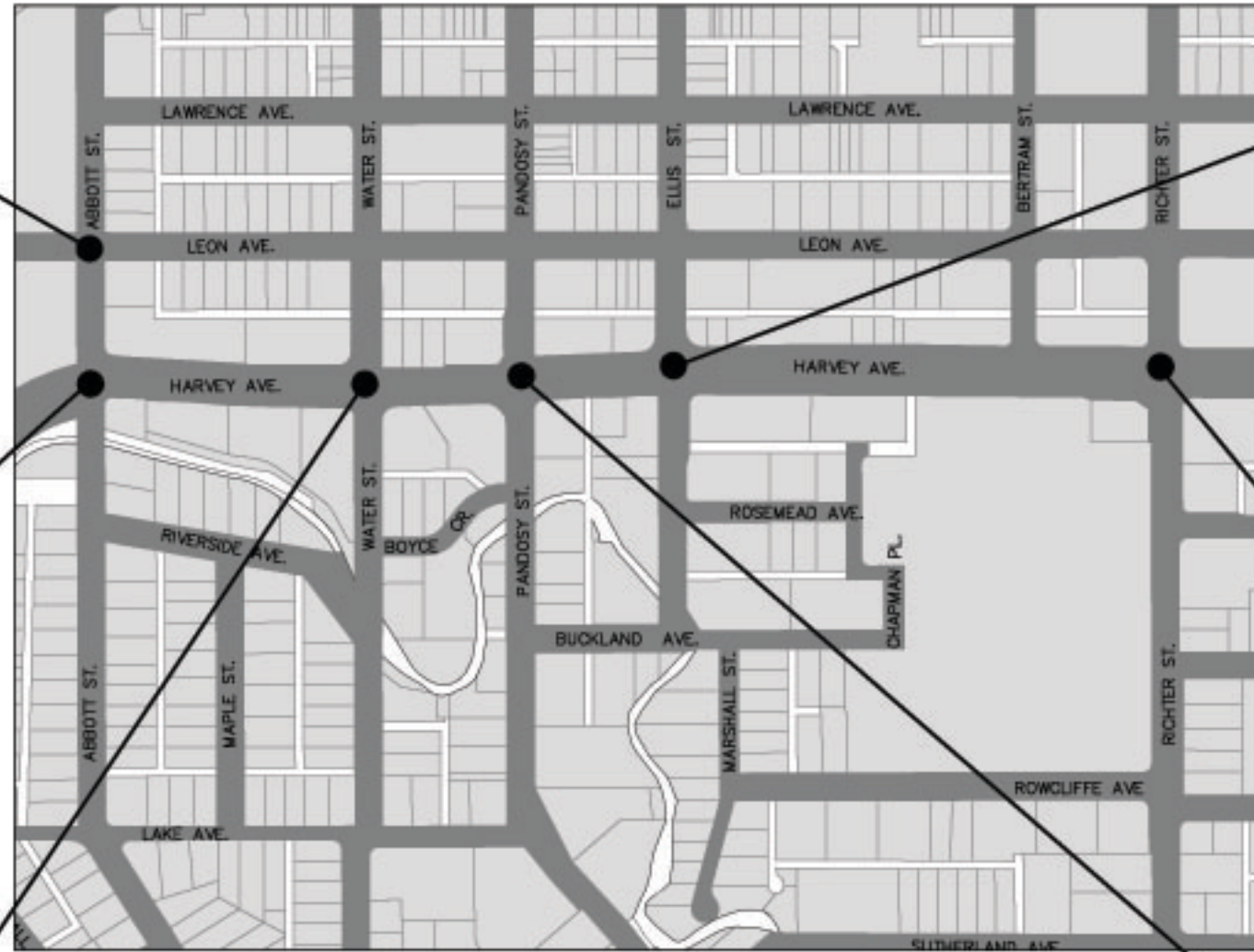
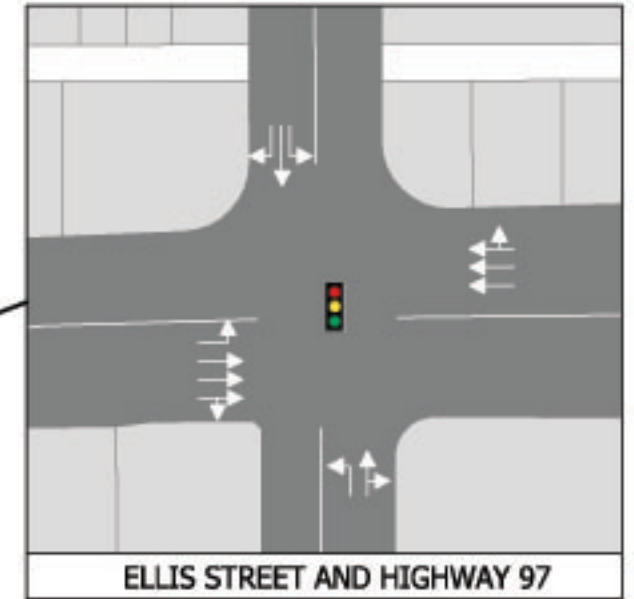




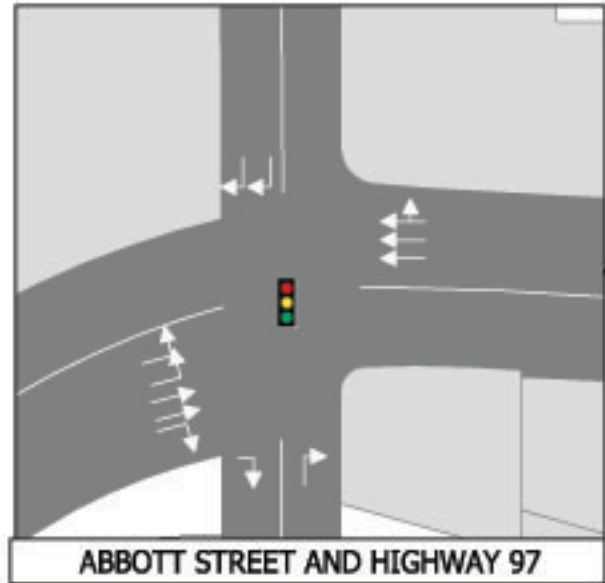
ALTERNATIVE 9 Left Turns Restricted on Highway



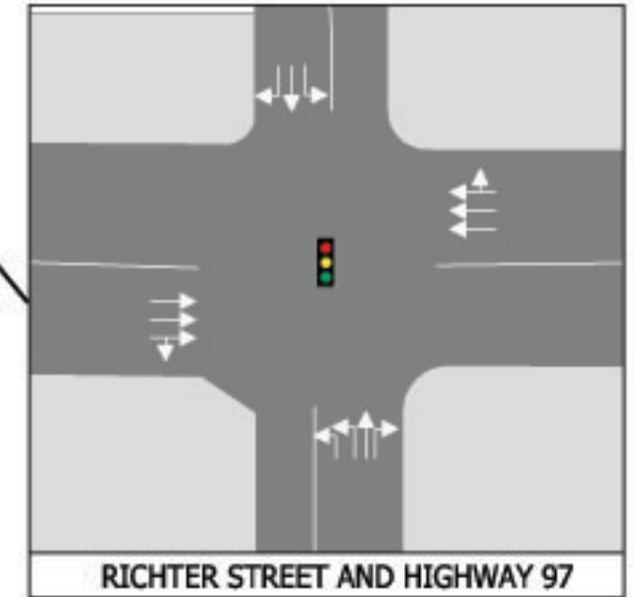
ABBOTT STREET AND LEON AVENUE



ELLIS STREET AND HIGHWAY 97



ABBOTT STREET AND HIGHWAY 97

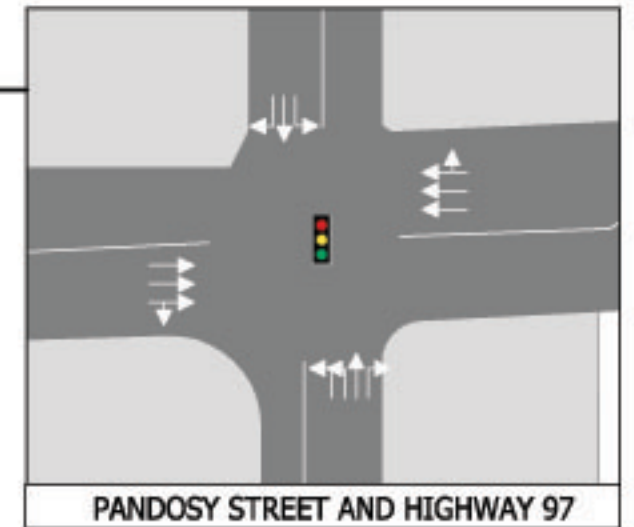


RICHTER STREET AND HIGHWAY 97



WATER STREET AND HIGHWAY 97

- WESTBOUND LEFTS FROM HIGHWAY 97 AT RICHTER AND PANDOSY ACHIEVED THROUGH LOOP BACKS (3 RIGHT TURNS) AT BERTRAM AND WATER RESPECTIVELY
- EASTBOUND LEFT AT ELLIS (TRUCK ROUTE) EXTENDED



PANDOSY STREET AND HIGHWAY 97